

	HIDRANTE	POSTE/ILUMINACAO	MARCO/NOQUE
	POCO DE VISTA	ESCALA	TUBO
	AL. INGENHEIRO	EXO	GUIA
	DETE. QD. COBERTA	SUA DE INFERNO	
	COBERT. DE NIVEL	PONTO DE BOMBA	ARvore
	EST. ENCAMISETADO	GRACA VIA	GRACA DE ABATE
	BARRACAO	REF. DE NIVEL	T.M. VERTICACAO
	CORSO D'AGUA	PONTO SONDADEIA	ALTA TENSAO
	ROCHA	LAGOA	ARVA



LOCALIZACAO S/ ESCOLA

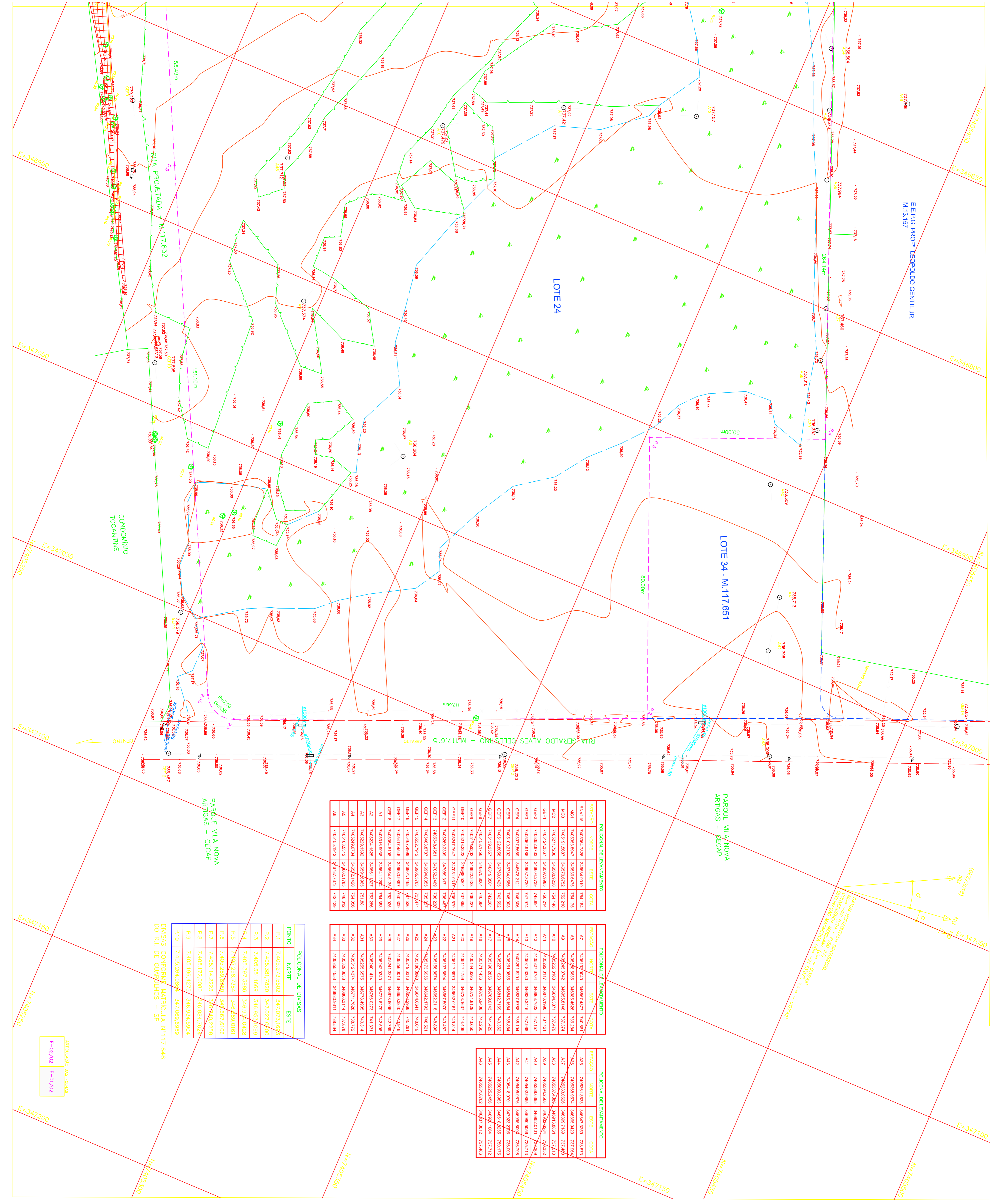
REFERENCIA PLANIMETRICA, COORDENADAS TOPOGRAFICAS, GEODASIA
POS-PROCESSAMENTO DE DADOS CORS - 96E-FRP - MZ2 COORDENADAS
REFUTAVE-SM-V15 (S-55) 08/01/03
LOCALIZACAO NO AEROFOTO DA RUA GERALDO ALVES CELESTINO, EM PRIMEIRO
PLANO, EM CORTEZINHO - PREREBELIA, MUNICIPIO DE GUARULHOS,
ESTADO DE SP - COORDEADAS: 23° 52' 53,10" S - 46° 42' 09,00" W

CDHU Companhia de Desenvolvimento Habitacional e Urbano
Rua Bela Vista, 170 - São Paulo - Tel: 5246.2000 - CNPJ: 47.854.097/0001-09

PROJETO: **QUADRA HABITACIONAL GUARULHOS - A8**
ENDEREÇO/MUNICIPIO: LOTE 24 - RUA GERALDO ALVES CELESTINO
BAIRRO DE CUMBICA

GUARULHOS - SP
TIPO: **TOPOGRAFIA**
ASSINTO: **LEVANTAMENTO PLANIMETRICO CADASTRAL**

AREA=64.516,90m²
ESCALA CADASTRAL: 1:500
DATA: **FEV/2019**
ASSINATURAS:
Proprietário: **CDHU**
Dir. de Desenvolvimento Habitacional e Urbano de Est. de São Paulo: **47.854.997/0001-09**
Dir. de Desenvolvimento Habitacional e Urbano de Est. de São Paulo: **20334/0**
outro - responsável técnico: **cdh**
Espaço para aprovação



POLIGONAL DE LEVANTAMENTO			
ESTACAO	NORTE	ESTE	CONTA
BNV15	740584,7928	346584,0018	754,1884
MC1	740583,8841	346580,0475	754,1175
MC2	740581,9380	346578,0322	752,2103
MC3	740581,9380	346580,0322	754,1466
CE1	740582,8290	346578,0322	752,2103
CE2	740582,8290	346578,0322	752,2103
CE3	740582,8290	346578,0322	752,2103
CE4	740582,8290	346578,0322	752,2103
CE5	740582,8290	346578,0322	752,2103
CE6	740582,8290	346578,0322	752,2103
CE7	740582,8290	346578,0322	752,2103
CE8	740582,8290	346578,0322	752,2103
CE9	740582,8290	346578,0322	752,2103
CE10	740582,8290	346578,0322	752,2103
CE11	740582,8290	346578,0322	752,2103
CE12	740582,8290	346578,0322	752,2103
CE13	740582,8290	346578,0322	752,2103
CE14	740582,8290	346578,0322	752,2103
CE15	740582,8290	346578,0322	752,2103
CE16	740582,8290	346578,0322	752,2103
CE17	740582,8290	346578,0322	752,2103
CE18	740582,8290	346578,0322	752,2103
CE19	740582,8290	346578,0322	752,2103
CE20	740582,8290	346578,0322	752,2103
CE21	740582,8290	346578,0322	752,2103
CE22	740582,8290	346578,0322	752,2103
CE23	740582,8290	346578,0322	752,2103
CE24	740582,8290	346578,0322	752,2103
CE25	740582,8290	346578,0322	752,2103
CE26	740582,8290	346578,0322	752,2103
CE27	740582,8290	346578,0322	752,2103
CE28	740582,8290	346578,0322	752,2103
CE29	740582,8290	346578,0322	752,2103
CE30	740582,8290	346578,0322	752,2103
CE31	740582,8290	346578,0322	752,2103
CE32	740582,8290	346578,0322	752,2103
CE33	740582,8290	346578,0322	752,2103
CE34	740582,8290	346578,0322	752,2103
CE35	740582,8290	346578,0322	752,2103
CE36	740582,8290	346578,0322	752,2103
CE37	740582,8290	346578,0322	752,2103
CE38	740582,8290	346578,0322	752,2103
CE39	740582,8290	346578,0322	752,2103
CE40	740582,8290	346578,0322	752,2103
CE41	740582,8290	346578,0322	752,2103
CE42	740582,8290	346578,0322	752,2103
CE43	740582,8290	346578,0322	752,2103
CE44	740582,8290	346578,0322	752,2103
CE45	740582,8290	346578,0322	752,2103
CE46	740582,8290	346578,0322	752,2103
CE47	740582,8290	346578,0322	752,2103
CE48	740582,8290	346578,0322	752,2103
CE49	740582,8290	346578,0322	752,2103
CE50	740582,8290	346578,0322	752,2103
CE51	740582,8290	346578,0322	752,2103
CE52	740582,8290	346578,0322	752,2103
CE53	740582,8290	346578,0322	752,2103
CE54	740582,8290	346578,0322	752,2103
CE55	740582,8290	346578,0322	752,2103
CE56	740582,8290	346578,0322	752,2103
CE57	740582,8290	346578,0322	752,2103
CE58	740582,8290	346578,0322	752,2103
CE59	740582,8290	346578,0322	752,2103
CE60	740582,8290	346578,0322	752,2103

POLIGONAL DE LEVANTAMENTO			
ESTACAO	NORTE	ESTE	CONTA
A7	740581,9380	346584,0018	754,1884
A8	740582,8290	346580,0475	752,2103
A9	740581,9380	346578,0322	752,2103
A10	740581,9380	346580,0322	754,1466
A11	740582,8290	346578,0322	752,2103
A12	740582,8290	346578,0322	752,2103
A13	740582,8290	346578,0322	752,2103
A14	740582,8290	346578,0322	752,2103
A15	740582,8290	346578,0322	752,2103
A16	740582,8290	346578,0322	752,2103
A17	740582,8290	346578,0322	752,2103
A18	740582,8290	346578,0322	752,2103
A19	740582,8290	346578,0322	752,2103
A20	740582,8290	346578,0322	752,2103
A21	740582,8290	346578,0322	752,2103
A22	740582,8290	346578,0322	752,2103
A23	740582,8290	346578,0322	752,2103
A24	740582,8290	346578,0322	752,2103
A25	740582,8290	346578,0322	752,2103
A26	740582,8290	346578,0322	752,2103
A27	740582,8290	346578,0322	752,2103
A28	740582,8290	346578,0322	752,2103
A29	740582,8290	346578,0322	752,2103
A30	740582,8290	346578,0322	752,2103
A31	740582,8290	346578,0322	752,2103
A32	740582,8290	346578,0322	752,2103
A33	740582,8290	346578,0322	752,2103
A34	740582,8290	346578,0322	752,2103

POLIGONAL DE DIMENS			
PONTO	NORTE	ESTE	CONTA
P.1	7.405.273,5802	346.073,1615	
P.2	7.405.381,7820	346.023,1800	
P.3	7.405.351,1668	346.893,0939	
P.4	7.405.397,3880	346.854,0428	
P.5	7.405.288,7384	346.893,0161	
P.6	7.405.285,8880	346.657,6106	
P.7	7.405.114,2223	346.657,6106	
P.8	7.405.172,0080	346.894,7623	
P.9	7.405.196,4272	346.934,3904	
P.10	7.405.264,0064	347.059,8959	

DIMENS CONFORME MATRICULA N°117.646 DO ROL DE GUARULHOS - SP